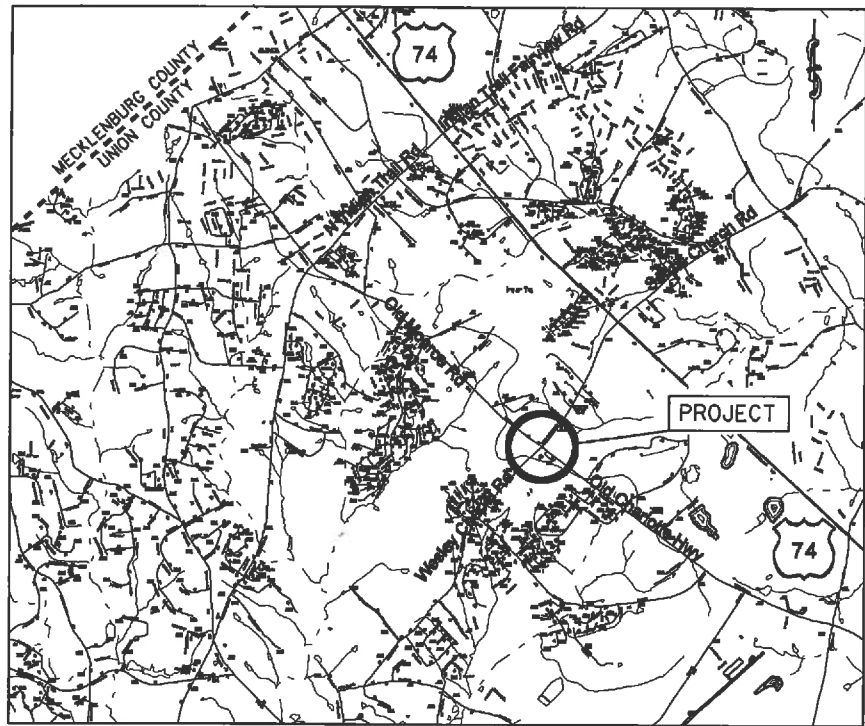


PROJECT: WBS 43530

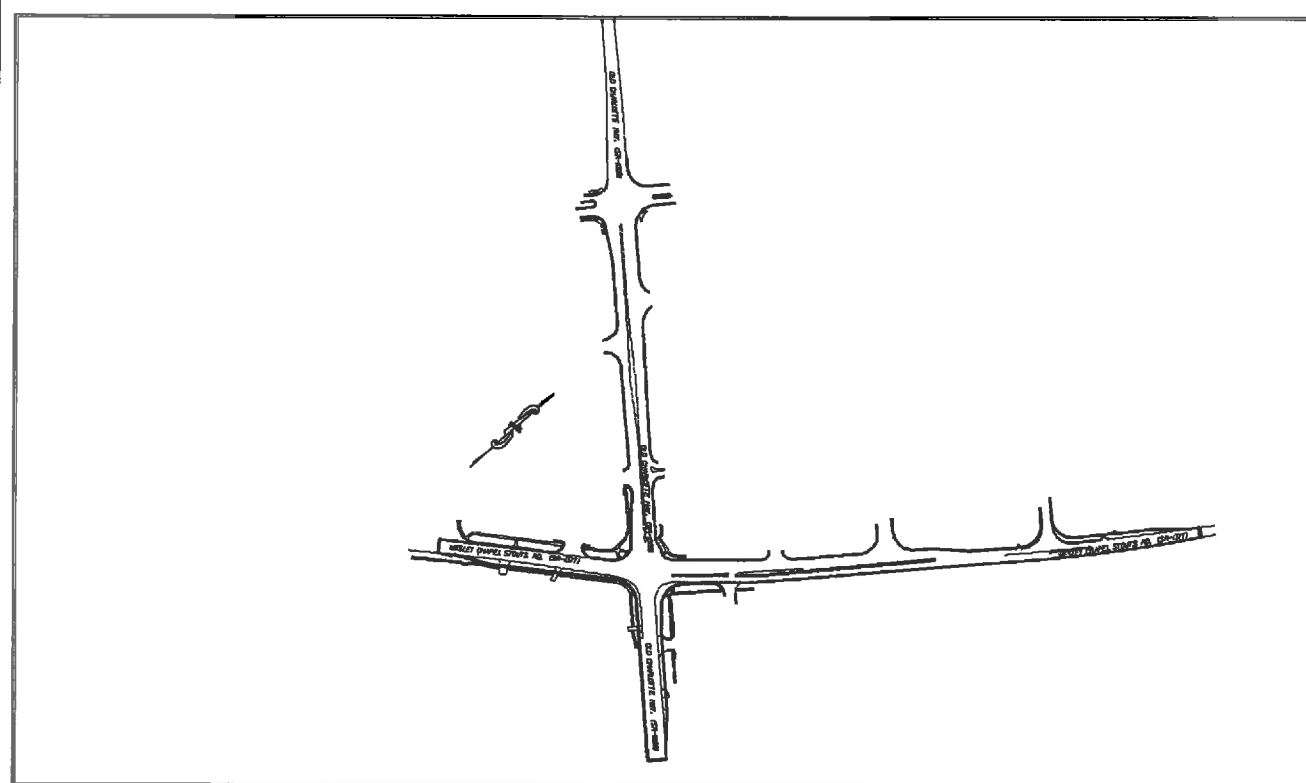


VICINITY MAP NOT TO SCALE

STATE OF NORTH CAROLINA
 DIVISION OF HIGHWAYS
UNION COUNTY

LOCATION: INTERSECTION OF OLD CHARLOTTE HWY (SR-1009)
 AND WESLEY CHAPEL STOUTS RD (SR-1377)

TYPE OF WORK: GRADING, PAVING, DRAINAGE, MILLING, CONCRETE ISLANDS &
 THERMOPLASTIC PAVEMENT MARKINGS

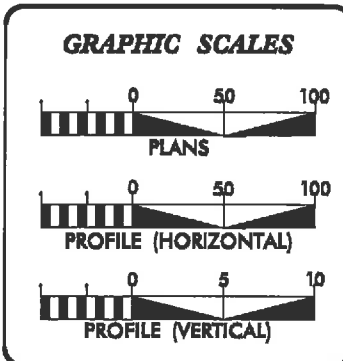


STATE	STATE PROJECT NUMBER	SHEET NO.	TOTAL SHEETS
N.C.	43530	1	
STATE PROJECT NO.	P.A. PROJECT NO.	DESCRIPTION	
43530		P.E.	
43530		R/W	
43530		CONST.	

ENVIRONMENTALLY SENSITIVE AREA(S)
 EXIST ON THIS PROJECT

Environmentally Sensitive Area(s) Exist
 From Sta. 28+10 -1-
 to Sta. 31+00 -1-
 Refer To E. C. Special Provisions
 for Special Considerations.

CLEARING ON THIS PROJECT SHALL BE TO
 THE LIMITS ESTABLISHED BY METHOD II AS
 DESCRIBED IN THE NCDOT STANDARD DRAWINGS



DESIGN DATA

ADT	=	
ADT	=	
DHV	=	%
D	=	%
T	=	%
V	=	MPH

PROJECT LENGTH

LENGTH OF ROADWAY PROJECT 43530	=	0.49	MILES
TOTAL LENGTH OF STATE PROJECT 43530	=	0.49	MILES

Prepared in the Office of:
DIVISION OF HIGHWAYS
 DIVISION TEN
 DIVISION DESIGN / CONSTRUCT UNIT

2012 STANDARD SPECIFICATIONS

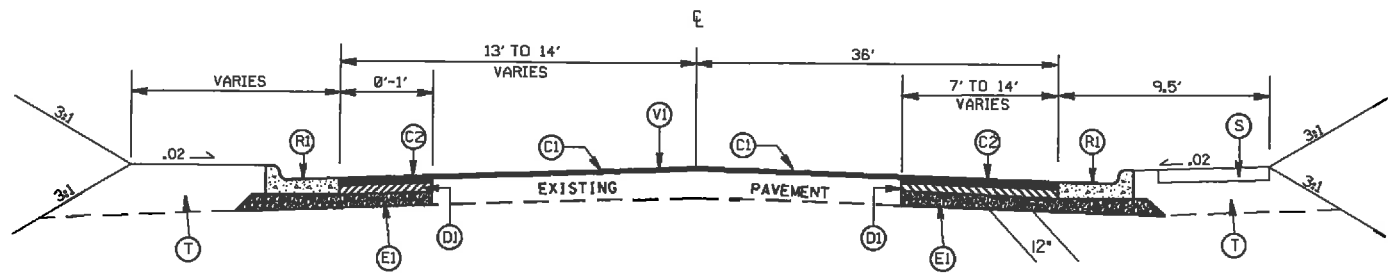
RIGHT OF WAY DATE:	RANDY BOWERS PROJECT ENGINEER
LETTING DATE: August 29, 2012	TERRY BURLESON PROJECT DESIGN ENGINEER



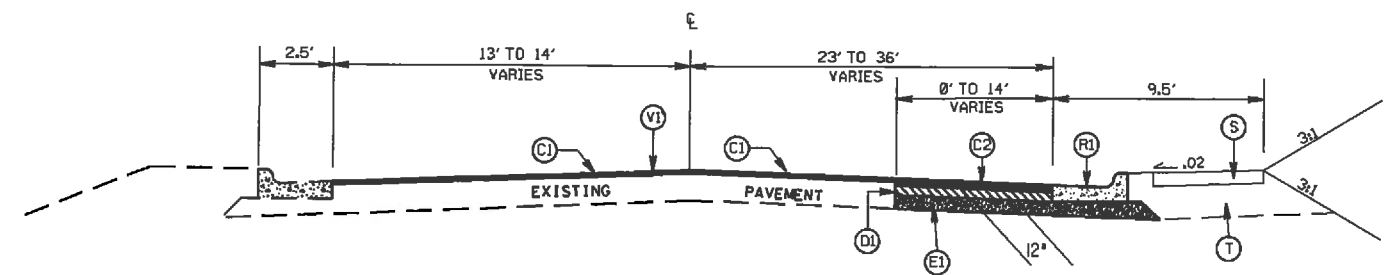
DIVISION OF HIGHWAYS
 STATE OF NORTH CAROLINA

APPROVED BY _____ DATE _____
 DDC ENGINEER

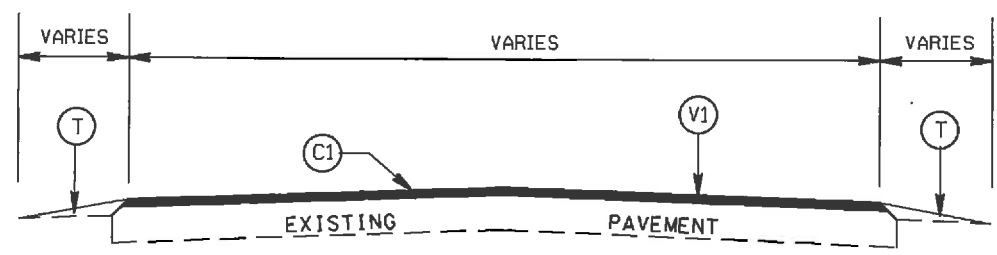
STATE	PROJECT NO.	SHEET NO.	TOTAL SHEETS
N.C.	43530	2	
F.A. PROJECT NO.			



TYPICAL SECTION NO. 3
STA. 12+79 TO 15+16 -L-



TYPICAL SECTION NO. 2
STA. 10+44.92 TO 12+79 -L-



TYPICAL SECTION NO. 1
STA. 10+09.92 TO 10+44.92 -L-
STA. 29+55 TO 29+80 -L-
STA. 30+20.72 TO 30+45.06 -YI-
STA. 31+95.06 TO 32+20.06 -YI-

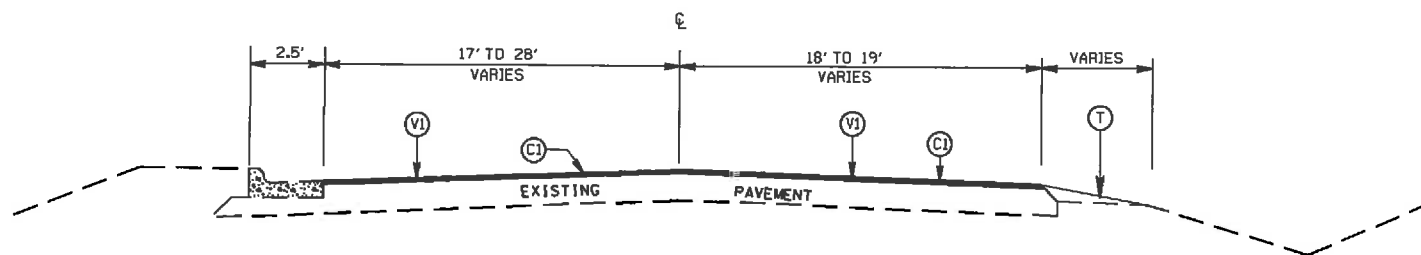
PAVEMENT SCHEDULE

(C1)	PROP. APPROX. 1½" ASPHALT CONC. SURFACE COURSE, TYPE S9.5C, AT AN AVERAGE RATE OF 168 LBS. PER SQ. YD.
(C2)	PROP. APPROX. 1½" ASPHALT CONC. SURFACE COURSE, TYPE S9.5C, AT AN AVERAGE RATE OF 168 LBS. PER SQ. YD. IN EACH OF TWO LAYERS.
(D1)	PROP. APPROX. 4" ASPHALT CONC. BINDER COURSE, TYPE I19.0C, AT AN AVERAGE RATE OF 456 LBS. PER SQ. YD.
(E1)	PROP. APPROX. 5.0" ASPHALT CONC. BASE COURSE, TYPE B25.0C, AT AN AVERAGE RATE OF 570 LBS. PER SQ. YD.
(R1)	PROP. 2'-6" CURB & GUTTER
(R2)	PROP. 5' MONOLITHIC ISLAND
(T)	EARTH MATERIAL
(V1)	MILLING ASPHALT PAVEMENT, 1.5' IN DEPTH
(S)	PROP. 4' CONC SIDEWALK

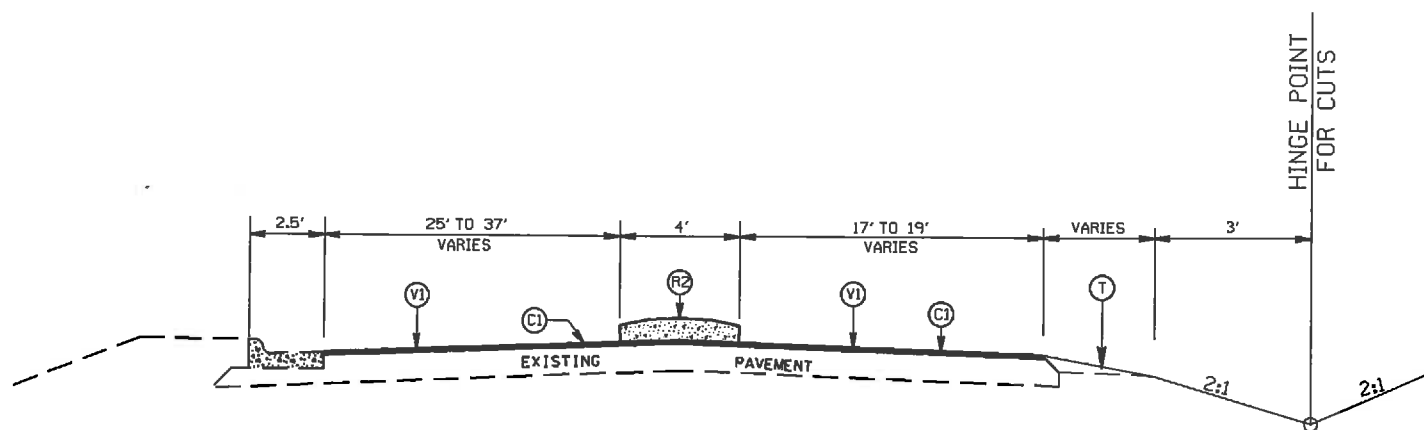
ROADWAY IMPROVEMENTS ALONG
WESLEY CHAPEL STOUTS RD. (SR-1377)
AT THE INTERSECTION OF
OLD CHARLOTTE HWY (SR-1009)

SCALE	1"=50'		REVISIONS
DATE	4-12		
DWG. BY	TWB		
DESIGN BY	TWB		
APPROVED	RWB		

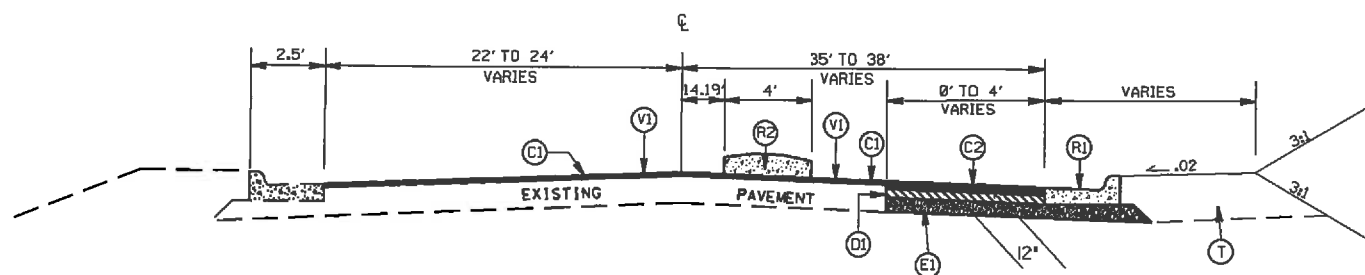
STATE	PROJECT NO.	SHEET NO.	TOTAL SHEETS
N.C.	43530	2A	
F.A. PROJECT NO.			



TYPICAL SECTION NO. 6
STA. 23+28 TO 24+14 -L-



TYPICAL SECTION NO. 5
STA. 17+69 TO 23+28 -L-



TYPICAL SECTION NO. 4
STA. 16+31 TO 17+69 -L-

PAVEMENT SCHEDULE

(C1)	PROP. APPROX. 1½" ASPHALT CONC. SURFACE COURSE, TYPE S9.5C, AT AN AVERAGE RATE OF 168 LBS. PER SQ. YD.
(C2)	PROP. APPROX. 1½" ASPHALT CONC. SURFACE COURSE, TYPE S9.5C, AT AN AVERAGE RATE OF 168 LBS. PER SQ. YD. IN EACH OF TWO LAYERS.
(D1)	PROP. APPROX. 4" ASPHALT CONC. BINDER COURSE, TYPE I19.0C, AT AN AVERAGE RATE OF 456 LBS. PER SQ. YD.
(E1)	PROP. APPROX. 5.0" ASPHALT CONC. BASE COURSE, TYPE B25.0C, AT AN AVERAGE RATE OF 570 LBS. PER SQ. YD.
(R1)	PROP. 2'-6" CURB & GUTTER
(R2)	PROP. 5' MONOLITHIC ISLAND
(T)	EARTH MATERIAL
(V1)	MILLING ASPHALT PAVEMENT, 1.5' IN DEPTH
(S)	PROP. 4" CONC SIDEWALK

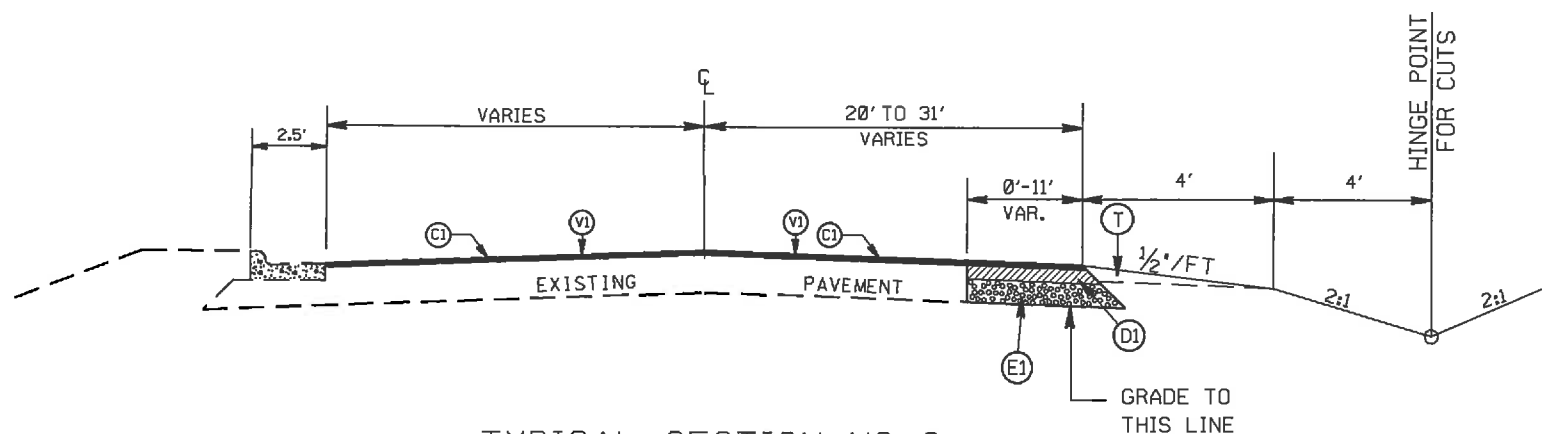
ROADWAY IMPROVEMENTS ALONG
WESLEY CHAPEL STOUTS RD. (SR-1377)
AT THE INTERSECTION OF
OLD CHARLOTTE HWY (SR-1009)

SCALE	1"=50'
DATE	4-12
DWG. BY	TWB
DESIGN BY	TWB
APPROVED	RWE

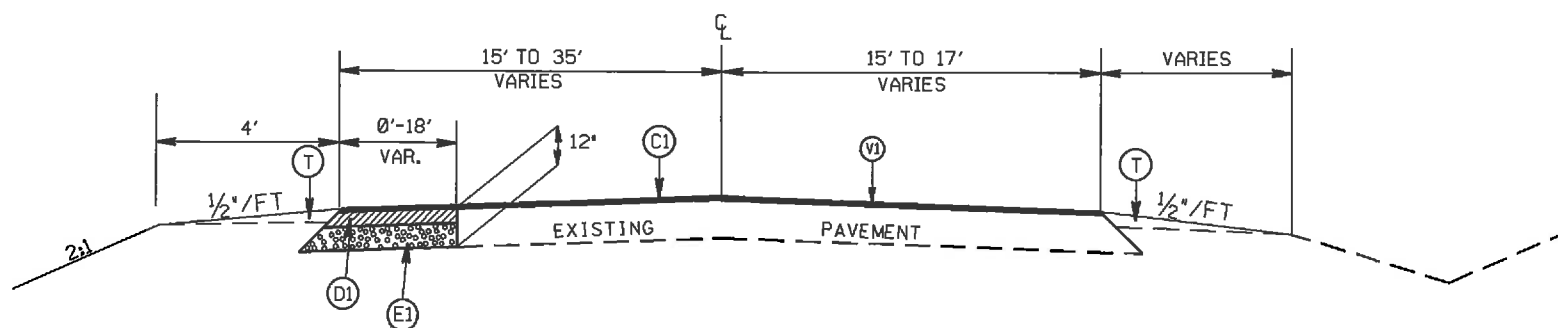


REVISIONS	

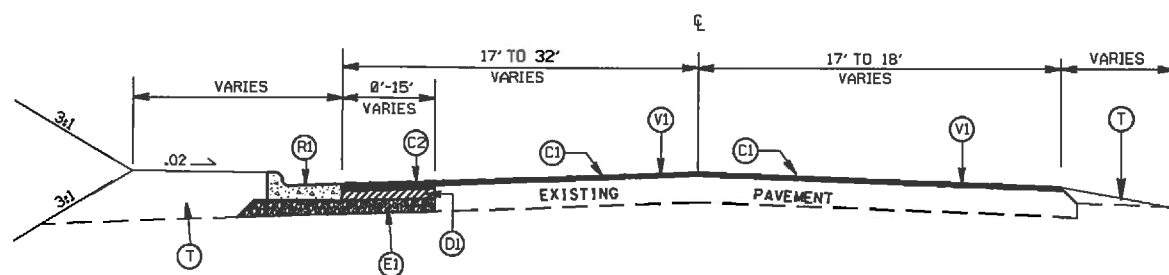
STATE	PROJECT NO.	SHEET NO.	TOTAL SHEETS
N.C.	43530	2B	
F.A. PROJECT NO.			



TYPICAL SECTION NO. 9
STA. 11+4.58 TO 14+08 -YI-



TYPICAL SECTION NO. 8
STA. 28+10 TO 29+55 -L-



TYPICAL SECTION NO. 7
STA. 24+14 TO 28+10 -L-

PAVEMENT SCHEDULE

(C1)	PROP. APPROX. 1½" ASPHALT CONC. SURFACE COURSE, TYPE S9.5C, AT AN AVERAGE RATE OF 168 LBS. PER SQ. YD.
(C2)	PROP. APPROX. 1½" ASPHALT CONC. SURFACE COURSE, TYPE S9.5C, AT AN AVERAGE RATE OF 168 LBS. PER SQ. YD. IN EACH OF TWO LAYERS.
(D1)	PROP. APPROX. 4" ASPHALT CONC. BINDER COURSE, TYPE I19.0C, AT AN AVERAGE RATE OF 456 LBS. PER SQ. YD.
(E1)	PROP. APPROX. 5.0" ASPHALT CONC. BASE COURSE, TYPE B25.0C, AT AN AVERAGE RATE OF 570 LBS. PER SQ. YD.
(R1)	PROP. 2'-6" CURB & GUTTER
(R2)	PROP. 5' MONOLITHIC ISLAND
(T)	EARTH MATERIAL
(V1)	MILLING ASPHALT PAVEMENT, 1.5' IN DEPTH
(S)	PROP. 4" CONC SIDEWALK

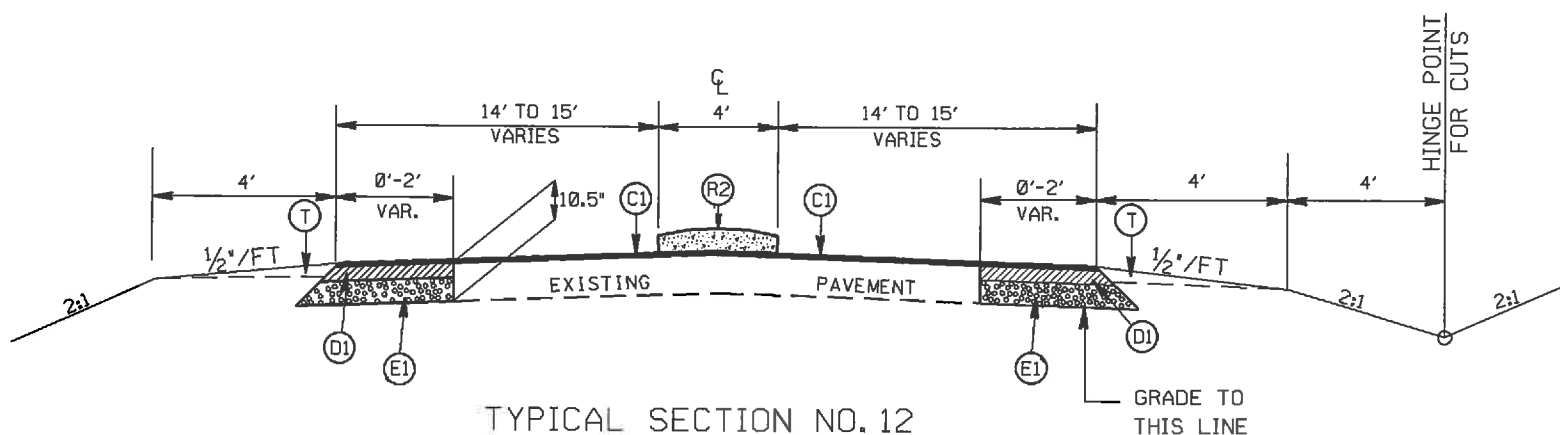
ROADWAY IMPROVEMENTS ALONG
WESLEY CHAPEL STOUTS RD. (SR-1377)
AT THE INTERSECTION OF
OLD CHARLOTTE HWY (SR-1009)

SCALE	1"=50'
DATE	4-12
DWG. BY	TWS
DESIGN BY	TWB
APPROVED	RWE



REVISIONS

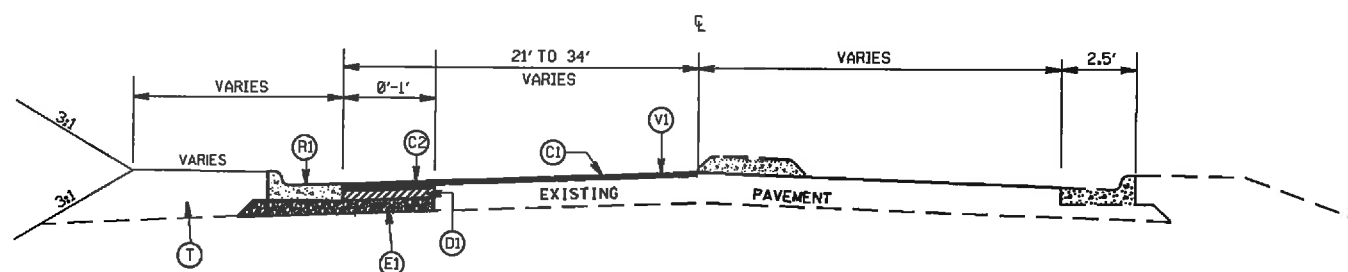
STATE	PROJECT NO.	SHEET NO.	TOTAL SHEETS
N.C.	43530	2C	
F.A. PROJECT NO.			



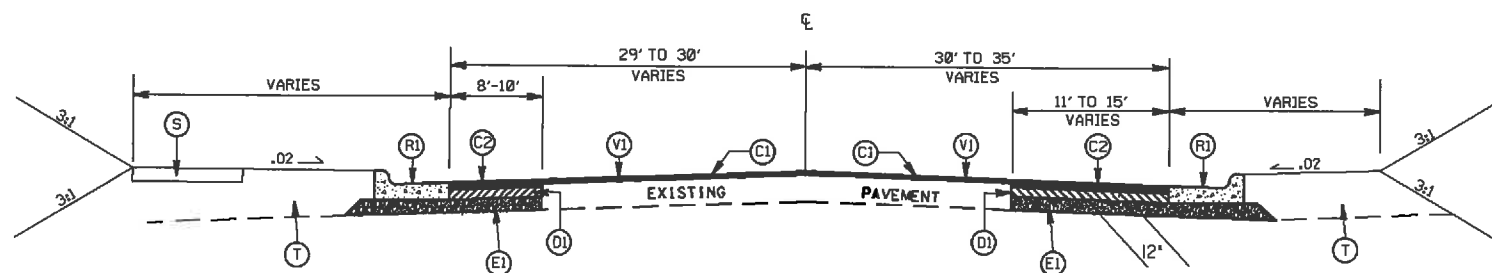
TYPICAL SECTION NO. 12
STA. 30+45.06 TO 31+45.06 -YI-

PAVEMENT SCHEDULE

(C1)	PROP. APPROX. 1½" ASPHALT CONC. SURFACE COURSE, TYPE S9.5C, AT AN AVERAGE RATE OF 168 LBS. PER SQ. YD.
(C2)	PROP. APPROX. 1½" ASPHALT CONC. SURFACE COURSE, TYPE S9.5C, AT AN AVERAGE RATE OF 168 LBS. PER SQ. YD. IN EACH OF TWO LAYERS.
(D1)	PROP. APPROX. 4" ASPHALT CONC. BINDER COURSE, TYPE I19.0C, AT AN AVERAGE RATE OF 456 LBS. PER SQ. YD.
(E1)	PROP. APPROX. 5.0" ASPHALT CONC. BASE COURSE, TYPE B25.0C, AT AN AVERAGE RATE OF 570 LBS. PER SQ. YD.
(R1)	PROP. 2'-6" CURB & GUTTER
(R2)	PROP. 5' MONOLITHIC ISLAND
(T)	EARTH MATERIAL
(V1)	MILLING ASPHALT PAVEMENT, 1.5' IN DEPTH
(S)	PROP. 4" CONC SIDEWALK



TYPICAL SECTION NO. 11
STA. 16+30 TO 18+17 -YI-



TYPICAL SECTION NO. 10
STA. 14+08 TO 15+50 -YI-

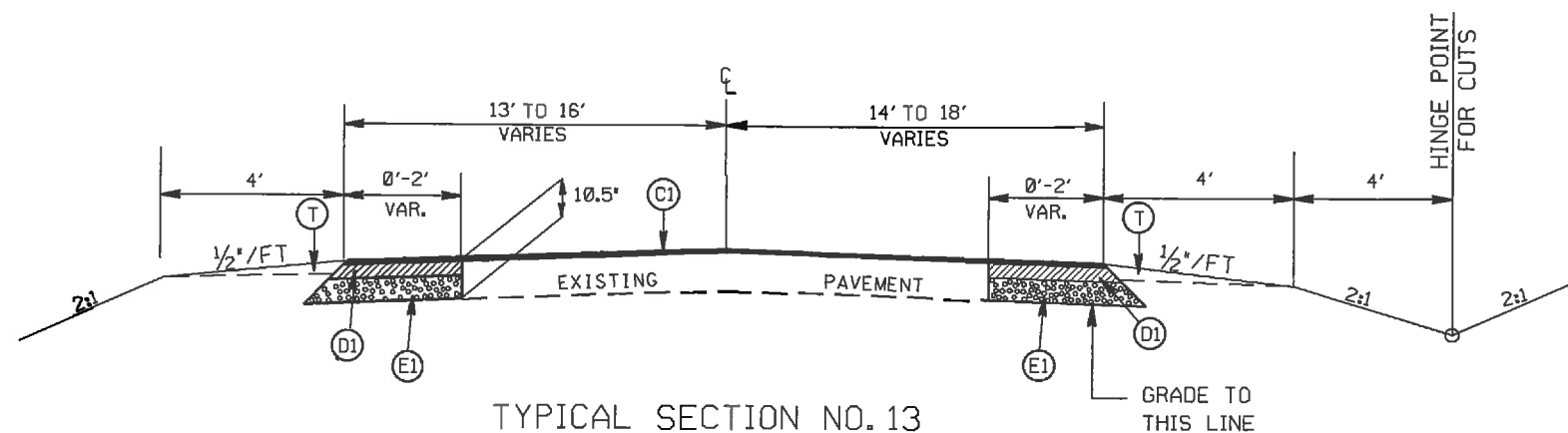
ROADWAY IMPROVEMENTS ALONG
WESLEY CHAPEL STOUTS RD. (SR-1377)
AT THE INTERSECTION OF
OLD CHARLOTTE HWY (SR-1009)

SCALE	1"=50'
DATE	4-12
DWG. BY	TWB
DESIGN BY	TWB
APPROVED	RWB



REVISIONS

STATE	PROJECT NO.	SHEET NO.	TOTAL SHEETS
N.C.	43530	2D	
F.A. PROJECT NO.			



TYPICAL SECTION NO. 13

STA. 31+45.06 TO 31+95.06 -YI-

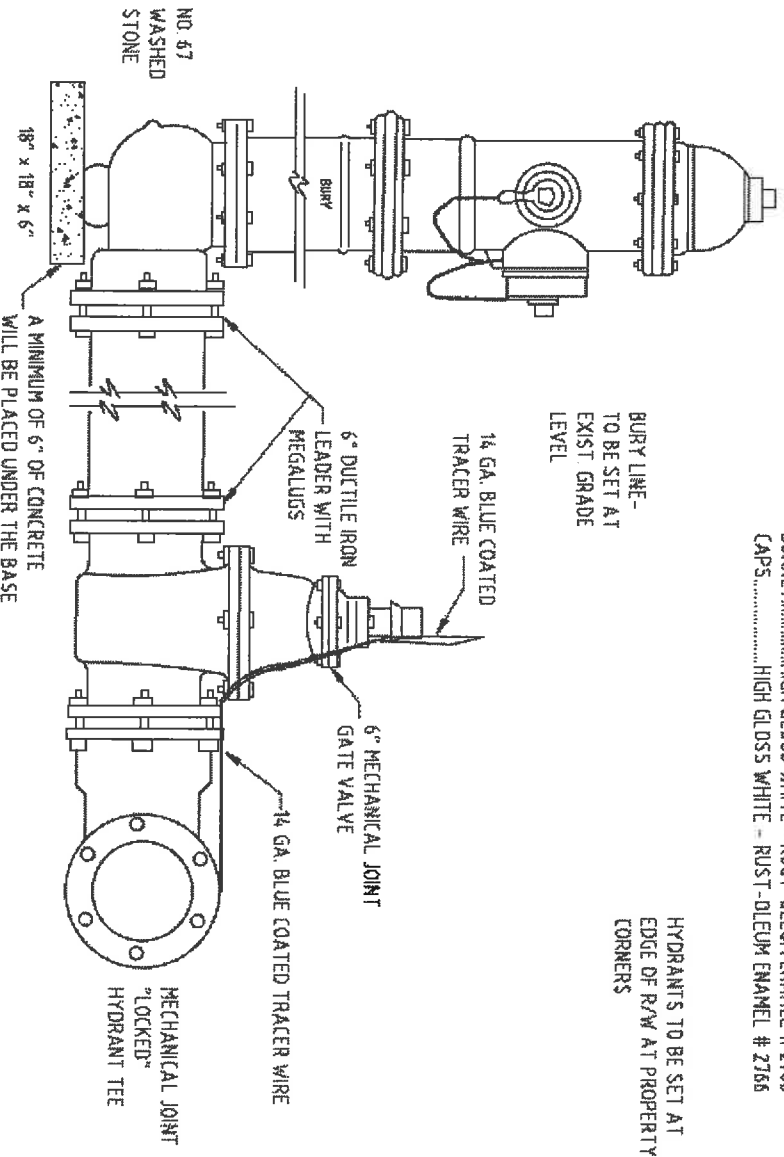
PAVEMENT SCHEDULE

(C1)	PROP. APPROX. 1½" ASPHALT CONC. SURFACE COURSE, TYPE S9.5C, AT AN AVERAGE RATE OF 168 LBS. PER SQ. YD.
(C2)	PROP. APPROX. 1½" ASPHALT CONC. SURFACE COURSE, TYPE S9.5C, AT AN AVERAGE RATE OF 168 LBS. PER SQ. YD. IN EACH OF TWO LAYERS.
(D1)	PROP. APPROX. 4" ASPHALT CONC. BINDER COURSE, TYPE I19.0C, AT AN AVERAGE RATE OF 456 LBS. PER SQ. YD.
(E1)	PROP. APPROX. 5.0" ASPHALT CONC. BASE COURSE, TYPE B25.0C, AT AN AVERAGE RATE OF 570 LBS. PER SQ. YD.
(R1)	PROP. 2'-6" CURB & GUTTER
(R2)	PROP. 5' MONOLITHIC ISLAND
(T)	EARTH MATERIAL
(V1)	MILLING ASPHALT PAVEMENT, 1.5" IN DEPTH
(S)	PROP. 4" CONC SIDEWALK

ROADWAY IMPROVEMENTS ALONG
WESLEY CHAPEL STOUTS RD. (SR-1377)
AT THE INTERSECTION OF
OLD CHARLOTTE HWY (SR-1009)

SCALE	1"=50'		REVISIONS
DATE	4-12		
DWG. BY	TWB		
DESIGN BY	TWB		
APPROVED	RWB		

STATE	PROJECT NO.	SHEET NO.	TOTAL SHEETS
N.C.	43530	2E	
F.A. PROJECT NO.			



PAINT COLORS
 BODY.....FIRE HYDRANT RED - RUST-OLEUM ENAMEL 7400 SYSTEM
 BONNET.....HIGH GLOSS WHITE - RUST-OLEUM ENAMEL # 2766
 CAPS.....HIGH GLOSS WHITE - RUST-OLEUM ENAMEL # 2766

BURY LINE-
 TO BE SET AT
 EXIST GRADE
 LEVEL

HYDRANTS TO BE SET AT
 EDGE OF R/W AT PROPERTY
 CORNERS

UNION COUNTY PUBLIC WORKS DEPARTMENT
 UNION COUNTY, N.C.

STANDARD DETAIL
FIRE HYDRANT INSTALLATION

SCALE	
DATE	11-17-06
	3

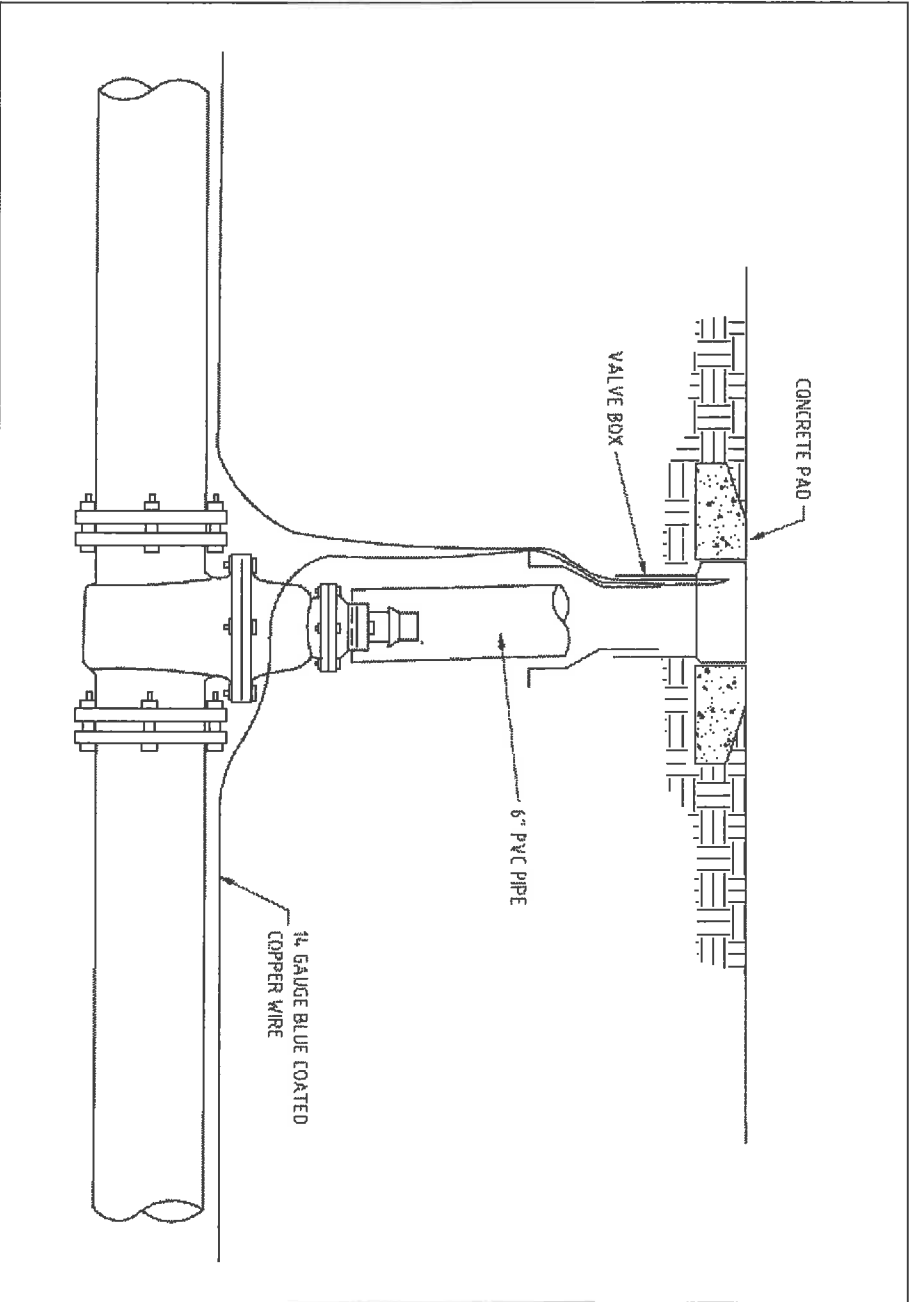
ROADWAY IMPROVEMENTS ALONG
 WESLEY CHAPEL STOUTS RD.(SR-1377)
 AT THE INTERSECTION OF
 OLD CHARLOTTE HWY (SR-1009)

SCALE	-NA-
DATE	8/12
DWG. BY	TWB
DESIGN BY	TWB
APPROVED	RWB



REVISIONS	

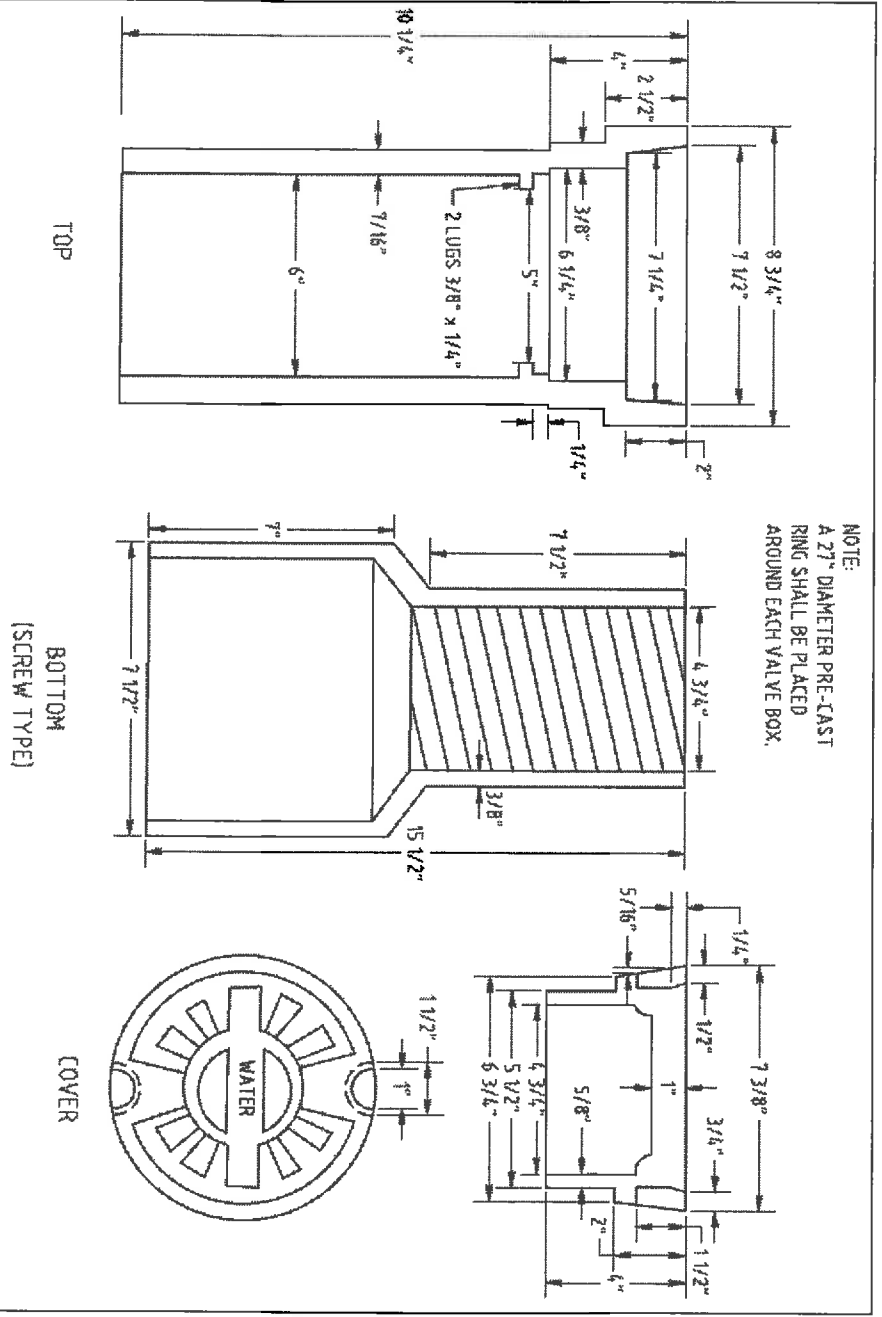
STATE	PROJECT NO.	SHEET NO.	TOTAL SHEETS
N.C.	43530	2F	
F.A. PROJECT NO.			



UNION COUNTY PUBLIC WORKS DEPARTMENT
UNION COUNTY, N.C.

STANDARD DETAIL
VALVE BOX INSTALLATION

SCALE: N.T.S.
DATE: 9-10-07
1A



UNION COUNTY PUBLIC WORKS DEPARTMENT
UNION COUNTY, N.C.

STANDARD DETAIL
VALVE BOX

SCALE: N.T.S.
DATE: 11-17-06
1

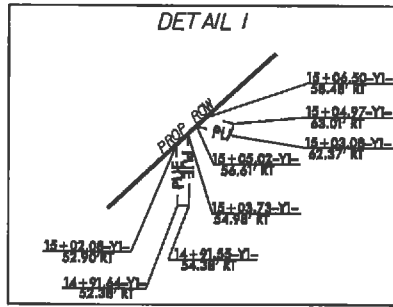
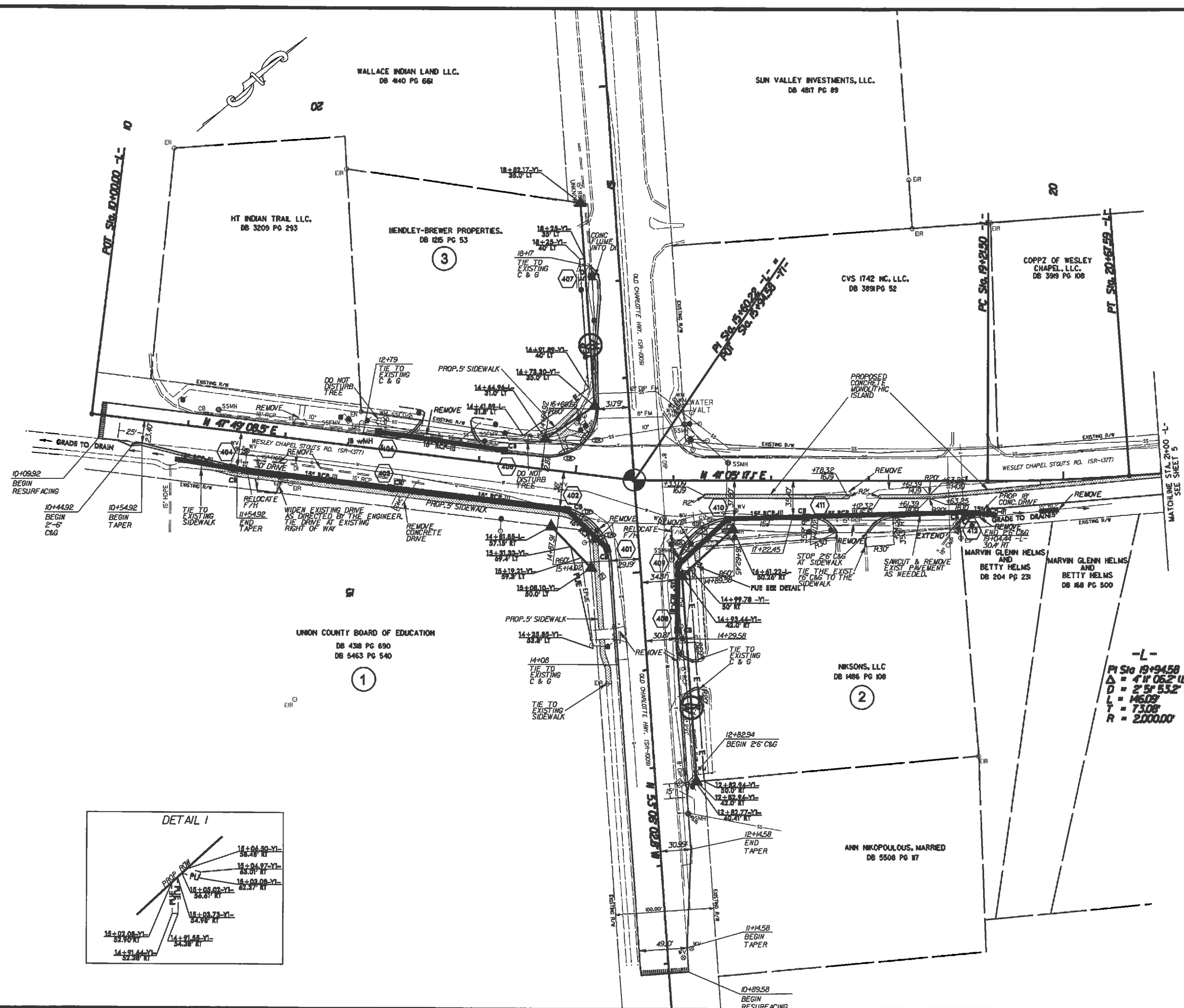
ROADWAY IMPROVEMENTS ALONG
WESLEY CHAPEL STOUTS RD.(SR-1377)
AT THE INTERSECTION OF
OLD CHARLOTTE HWY (SR-1009)

SCALE	-NA-
DATE	8-12
DWG. BY	TWB
DESIGN BY	TWB
APPROVED	RWB



REVISIONS	

STATE	PROJECT NO.	SHEET NO.	TOTAL SHEETS
N.C.	43530	4	
F.A. PROJECT NO.			

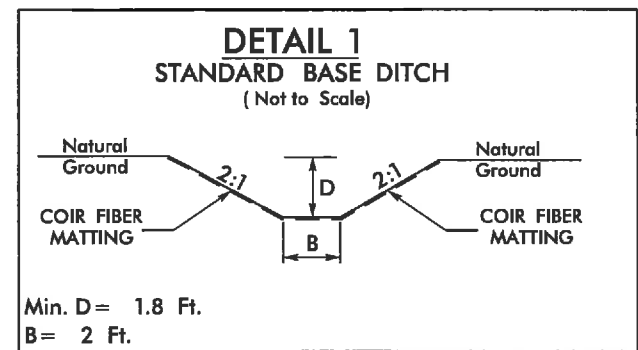
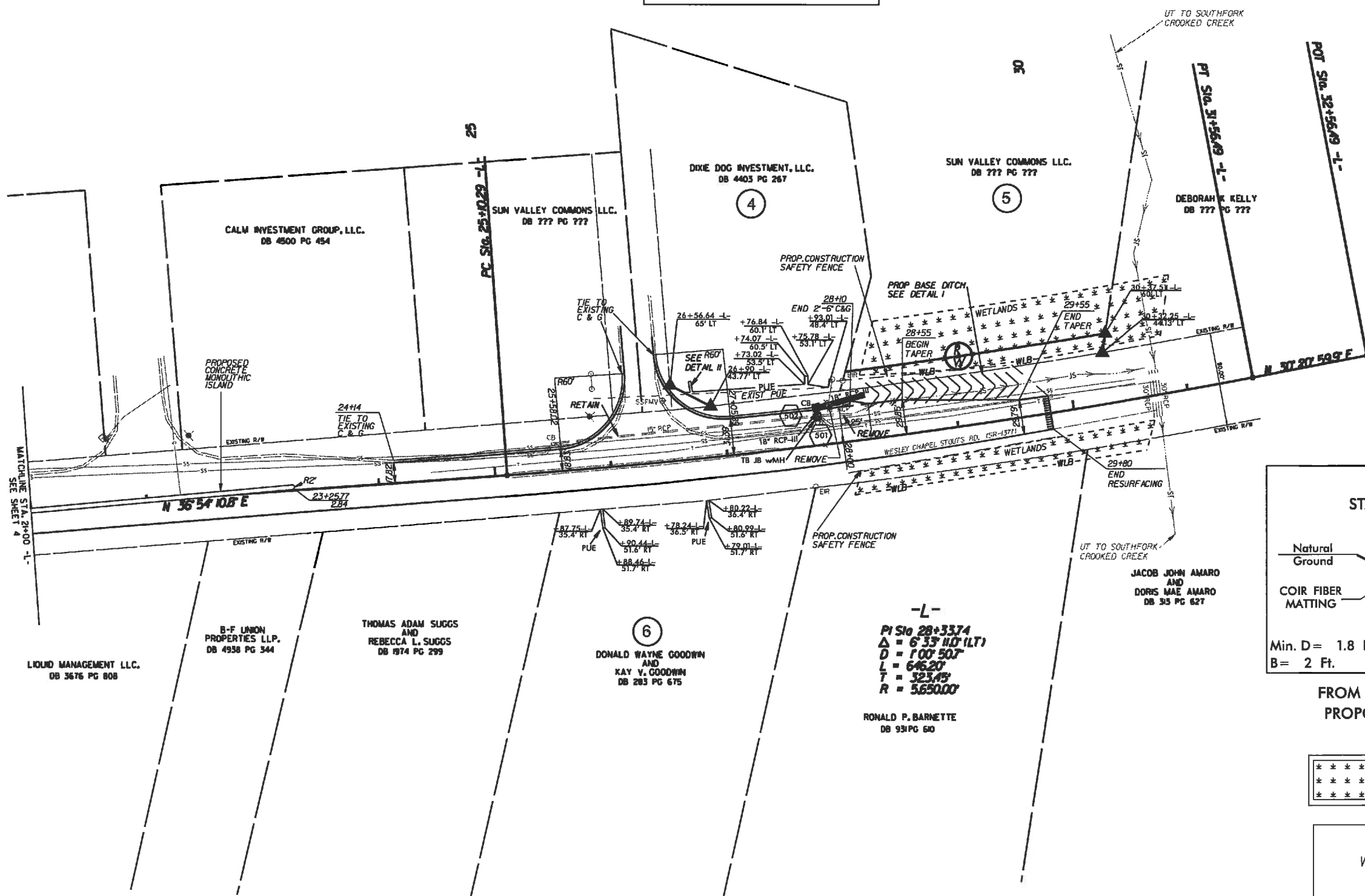
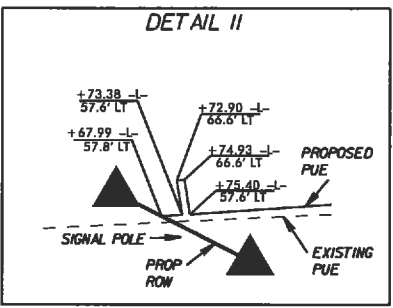
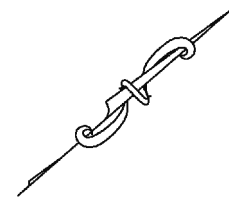


-L-
 PI Sta 19+94.58
 Δ = 4" 05.2' (LT)
 D = 2' 5" 53.2'
 L = 146.08'
 T = 73.08'
 R = 2000.00'

ROADWAY IMPROVEMENTS ALONG
 WESLEY CHAPEL STOUTS RD.(SR-1377)
 AT THE INTERSECTION OF
 OLD CHARLOTTE HWY (SR-1009)

SCALE	1"=50'		REVISIONS
DATE	3/11		
DWG. BY	TWB		
DESIGN BY	TWB		
APPROVED	RWB		

STATE	PROJECT NO.	SHEET NO.	TOTAL SHEETS
N.C.	43530	5	
F.A. PROJECT NO.			



FROM STA. 28+23 TO STA. 29+80
PROPOSED DITCH GRADE IS 0.3%

***** ENVIRONMENTALLY SENSITIVE AREA
***** SEE PROJECT SPECIAL PROVISIONS

ROADWAY IMPROVEMENTS ALONG
WESLEY CHAPEL STOUTS RD. (SR-1377)
AT THE INTERSECTION OF
OLD CHARLOTTE HWY (SR-1009)

SCALE	1"=50'		REVISIONS
DATE	3/11		
DWG. BY	TWB		
DESIGN BY	TWB		
APPROVED	RWB		

POT Sta. 33+92.9 -Y1-

JUDY L. WOOTEN
DB 1628 PG 428

ATHANASIOS P. KAKOURAS
DB 4747 PG 632

PROPOSED
CONCRETE
MONOLITHIC
ISLAND

FUTURE ENTRANCE TO BE
CONSTRUCTED BY OTHERS

LENNAR CAROLINAS LLC.
DB 5603 PG 266

SUN VALLEY COMMONS LLC.
DB 398 PG 453


LENNAR CAROLINAS LLC.
DB 5603 PG 215

MUSTANG DRIVE.

PRIMAX PROPERTIES, LLC.
DB 5458 PG 66

JOAN F. OLSON 2008 LIVING TRUST
AND
WILLIAM B. & JANA COLLINS 2008 TRUST
DB 4848 PG 773

STATE	PROJECT NO.	SHEET NO.	TOTAL SHEETS
N.C.	43530	6	
F.A. PROJECT NO.			

ROADWAY IMPROVEMENTS ALONG WESLEY CHAPEL STOUTS RD. (SR-1377) AT THE INTERSECTION OF OLD CHARLOTTE HWY (SR-1009)		
SCALE	1"=50'	
DATE	3/11	
DWG. BY	TW3	
DESIGN BY	TWE	
APPROVED	RWE	
		REVISIONS

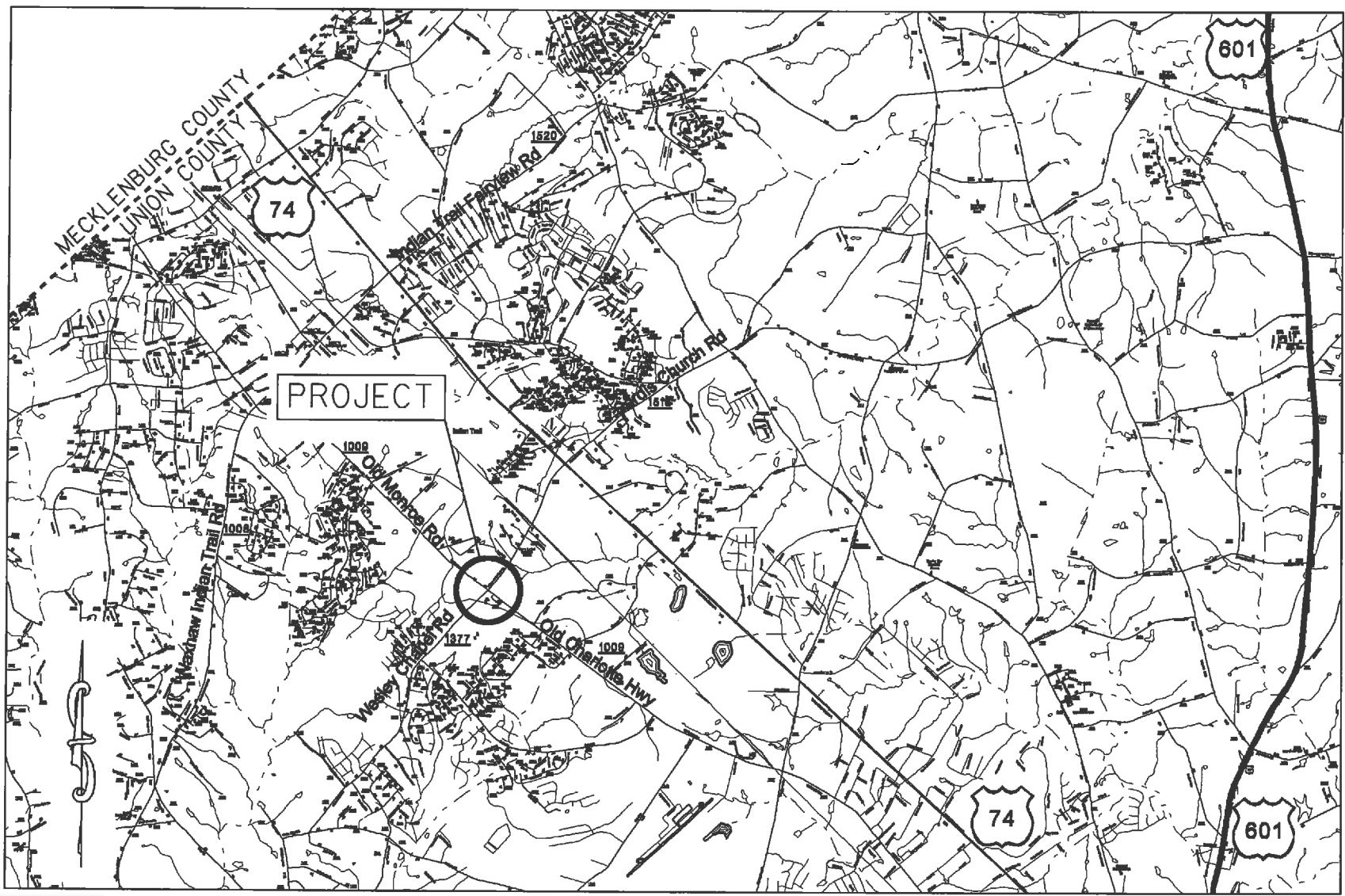
STATE OF NORTH CAROLINA

DIVISION OF HIGHWAYS

PLAN FOR PROPOSED HIGHWAY EROSION CONTROL

STATE	STATE PROJECT REFERENCE NO.	SHEET NO.	TOTAL SHEETS
N.C.	43530	EC-1	
STATE PROJ. NO.	F.A. PROJ. NO.	DESCRIPTION	

PROJECT: 43530

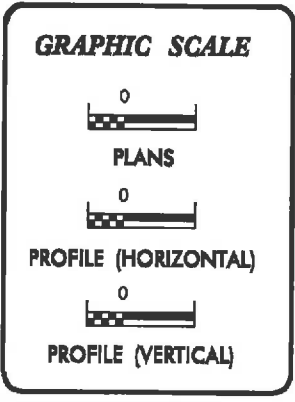


EROSION AND SEDIMENT CONTROL MEASURES

Sd.	Description	Symbol
1630.03	Temporary Silt Ditch	
1630.05	Temporary Diversion	
1605.01	Temporary Silt Fence	
1606.01	Special Sediment Control Fence	
1622.01	Temporary Berms and Slope Drains	
1630.02	Silt Basin Type B	
1633.01	Temporary Rock Silt Check Type-A	
	Temporary Rock Silt Check Type-A with Matting and Polyacrylamide (PAM)	
1633.02	Temporary Rock Silt Check Type-B	
	Wattle / Coir Fiber Wattle	
	Wattle / Coir Fiber Wattle with Polyacrylamide (PAM)	
1654.01	Temporary Rock Sediment Dam Type-A	
1634.02	Temporary Rock Sediment Dam Type-B	
1635.01	Rock Pipe Inlet Sediment Trap Type-A	
1636.02	Rock Pipe Inlet Sediment Trap Type-B	
1630.04	Stilling Basin	
1630.06	Special Stilling Basin	
	Rock Inlet Sediment Trap:	
1632.01	Type A	
1632.02	Type B	
1632.03	Type C	
	Skimmer Basin	
	Tiered Skimmer Basin	
	Infiltration Basin	

THIS PROJECT CONTAINS EROSION CONTROL PLANS FOR CLEARING AND GRUBBING PHASE OF CONSTRUCTION.

ENVIRONMENTALLY SENSITIVE AREA(S) EXIST ON THIS PROJECT
Refer To E. C. Special Provisions for Special Considerations.



ROADSIDE ENVIRONMENTAL UNIT
DIVISION OF HIGHWAYS
STATE OF NORTH CAROLINA

THESE EROSION AND SEDIMENT CONTROL PLANS COMPLY WITH THE REGULATIONS SET FORTH BY THE NCG-010000 GENERAL CONSTRUCTION PERMIT EFFECTIVE AUGUST 3, 2011 ISSUED BY THE NORTH CAROLINA DEPARTMENT OF ENVIRONMENT AND NATURAL RESOURCES DIVISION OF WATER QUALITY.

Prepared In the Office of:

DDC UNIT DIVISION 10
DEPARTMENT OF TRANSPORTATION
DIVISION OF HIGHWAYS

2012 STANDARD SPECIFICATIONS

DONALD HARWARD 3028
EROSION CONTROL DESIGNER LEVEL III-A CERTIFICATION #

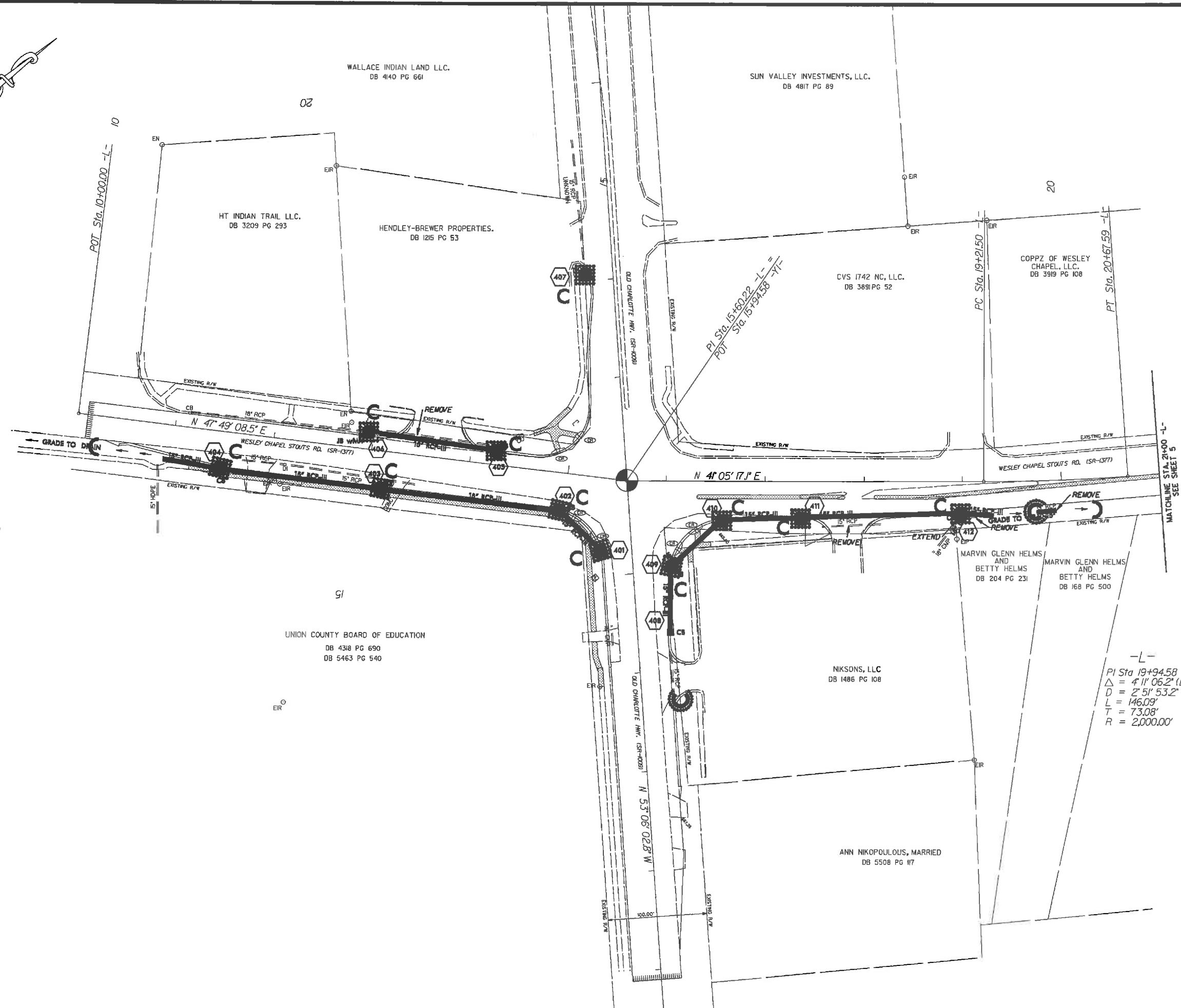
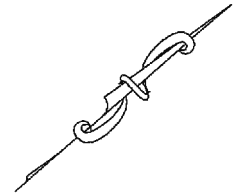
Roadway Standard Drawings

The following roadway English standards as appear in "Roadway Standard Drawings"- Roadway Design Unit - N. C. Department of Transportation - Raleigh, N. C., dated January 2012 and the latest revision thereto are applicable to this project and by reference hereby are considered a part of these plans.

1604.01 Railroad Erosion Control Detail	1632.01 Rock Inlet Sediment Trap Type A
1605.01 Temporary Silt Fence	1632.02 Rock Inlet Sediment Trap Type B
1606.01 Special Sediment Control Fence	1632.03 Rock Inlet Sediment Trap Type C
1607.01 General Construction Entrance	1633.01 Temporary Rock Silt Check Type A
1622.01 Temporary Berms and Slope Drains	1633.02 Temporary Rock Silt Check Type B
1630.01 Silt Basin	1634.01 Temporary Rock Sediment Dam Type A
1630.02 Silt Basin Type B	1634.02 Temporary Rock Sediment Dam Type B
1630.03 Temporary Silt Ditch	1635.01 Rock Pipe Inlet Sediment Trap Type A
1630.04 Stilling Basin	1635.02 Rock Pipe Inlet Sediment Trap Type B
1630.05 Temporary Diversion	1640.01 Coir Fiber Baffle
1630.06 Special Stilling Basin	1645.01 Temporary Stream Crossing
1631.01 Matting Installation	

15-AUG-2012 14:45
c:\paper\2012\08\20120820\eroc\eroc-stations-erosion-title sheet.dgn

STATE	PROJECT NO.	SHEET NO.	TOTAL SHEETS
N.C.	43530	EC-2	
F.A. PROJECT NO.			

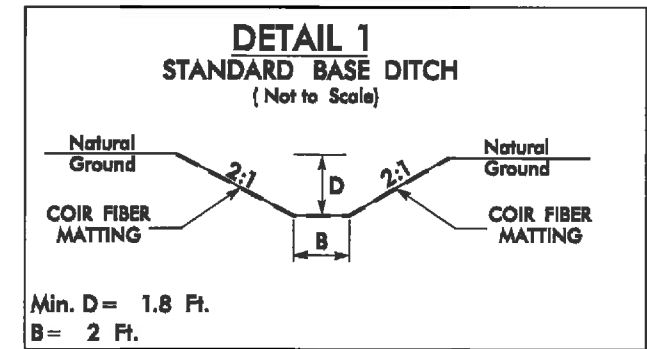
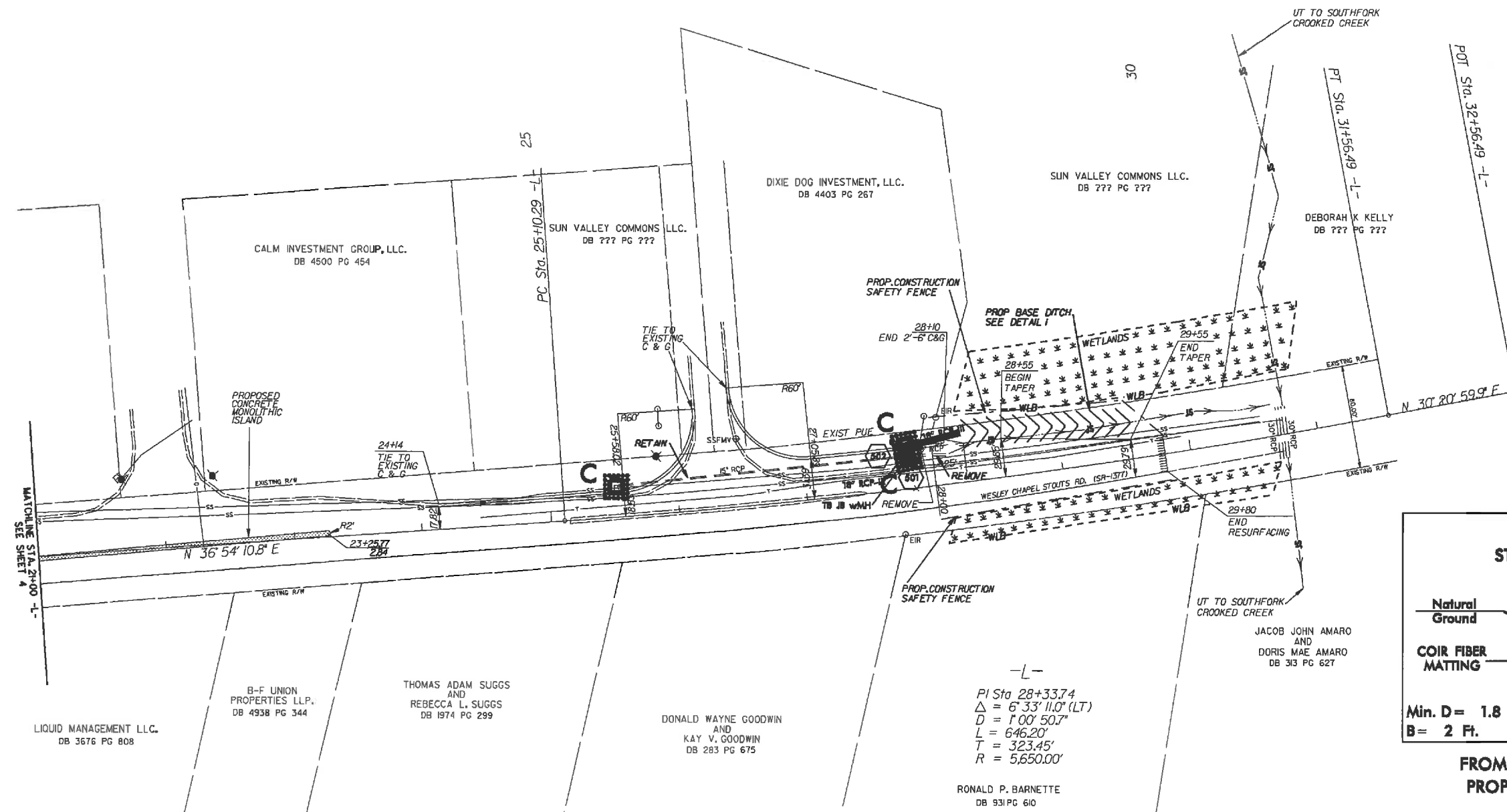


-L-
 PI Sta 19+94.58
 $\Delta = 411' 06.2" (LT)$
 $D = 2' 51' 53.2"$
 $L = 146.09'$
 $T = 73.08'$
 $R = 2,000.00'$

**ROADWAY IMPROVEMENTS ALONG
 WESLEY CHAPEL STOUTS RD. (SR-1377)
 AT THE INTERSECTION OF
 OLD CHARLOTTE HWY (SR-1009)**

SCALE	1"=50'		REVISIONS
DATE	3/11		
DWG. BY	TWB		
DESIGN BY	TWB		
APPROVED	RWB		

STATE	PROJECT NO.	SHEET NO.	TOTAL SHEETS
N.C.	43530	EC-3	
F.A. PROJECT NO.			



FROM STA. 28+23 TO STA. 29+80
PROPOSED DITCH GRADE IS 0.3%

ENVIRONMENTALLY SENSITIVE AREA
SEE PROJECT SPECIAL PROVISIONS

ROADWAY IMPROVEMENTS ALONG
WESLEY CHAPEL STOUTS RD. (SR-1377)
AT THE INTERSECTION OF
OLD CHARLOTTE HWY (SR-1009)

SCALE	1"=50'		REVISIONS
DATE	3/11		
DWG. BY	TWB		
DESIGN BY	TWB		
APPROVED	RWB		

POT Sta. 33+19.29 -Y1-

JUDY L. WOOTEN
DB 1628 PG 428

ATHANASIOS P. KAKOURAS
DB 4747 PG 632

LENNAR CAROLINAS LLC.
DB 5603 PG 266

LENNAR CAROLINAS LLC.
DB 5603 PG 275

PRIMAX PROPERTIES, LLC.
DB 5458 PG 66

JOAN F. OLSON 2008 LIVING TRUST
AND
WILLIAM B. & JANA COLLINS 2008 TRUST
DB 4848 PG 773

SUN VALLEY COMMONS LLC.
DB 3198 PG 453

STATE	PROJECT NO.	SHEET NO.	TOTAL SHEETS
N.C.	43530	EC-4	
F.A. PROJECT NO.			

PROPOSED CONCRETE MONOLITHIC ISLAND

FUTURE ENTRANCE TO BE CONSTRUCTED BY OTHERS

30+58.8
2.7'

12.40PF
R2'

13.6' 13.6'

29+72
3.8'

15.1' 15.1'

R2'

N 53° 06' 02.8" W
100 CHARLOTTE HWY (SR-1377)

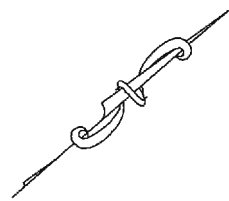
MUSTANG DRIVE.

SSMH


BT F/H

EXISTING 30' W

EXISTING 30' W



ROADWAY IMPROVEMENTS ALONG
WESLEY CHAPEL STOUTS RD. (SR-1377)
AT THE INTERSECTION OF
OLD CHARLOTTE HWY (SR-1009)

SCALE	1"=50'		REVISIONS
DATE	3/11		
DWG. BY	TWB		
DESIGN BY	TWB		
APPROVED	RWB		

STATE	PROJECT NO.	SHEET NO.	TOTAL SHEETS
N.C.	43530	PMP-1	
F.A. PROJECT NO.			

PAVEMENT MARKING SCHEDULE

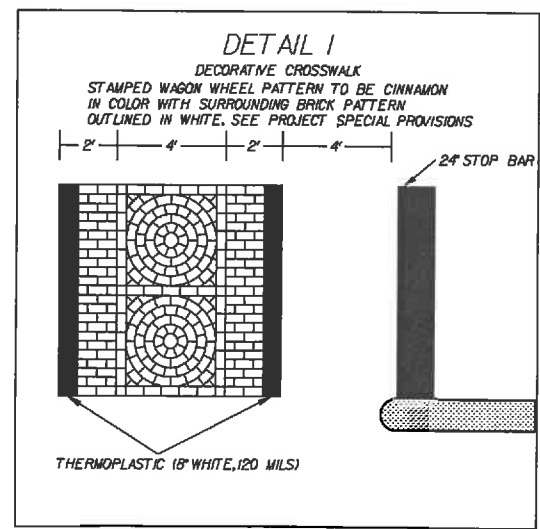
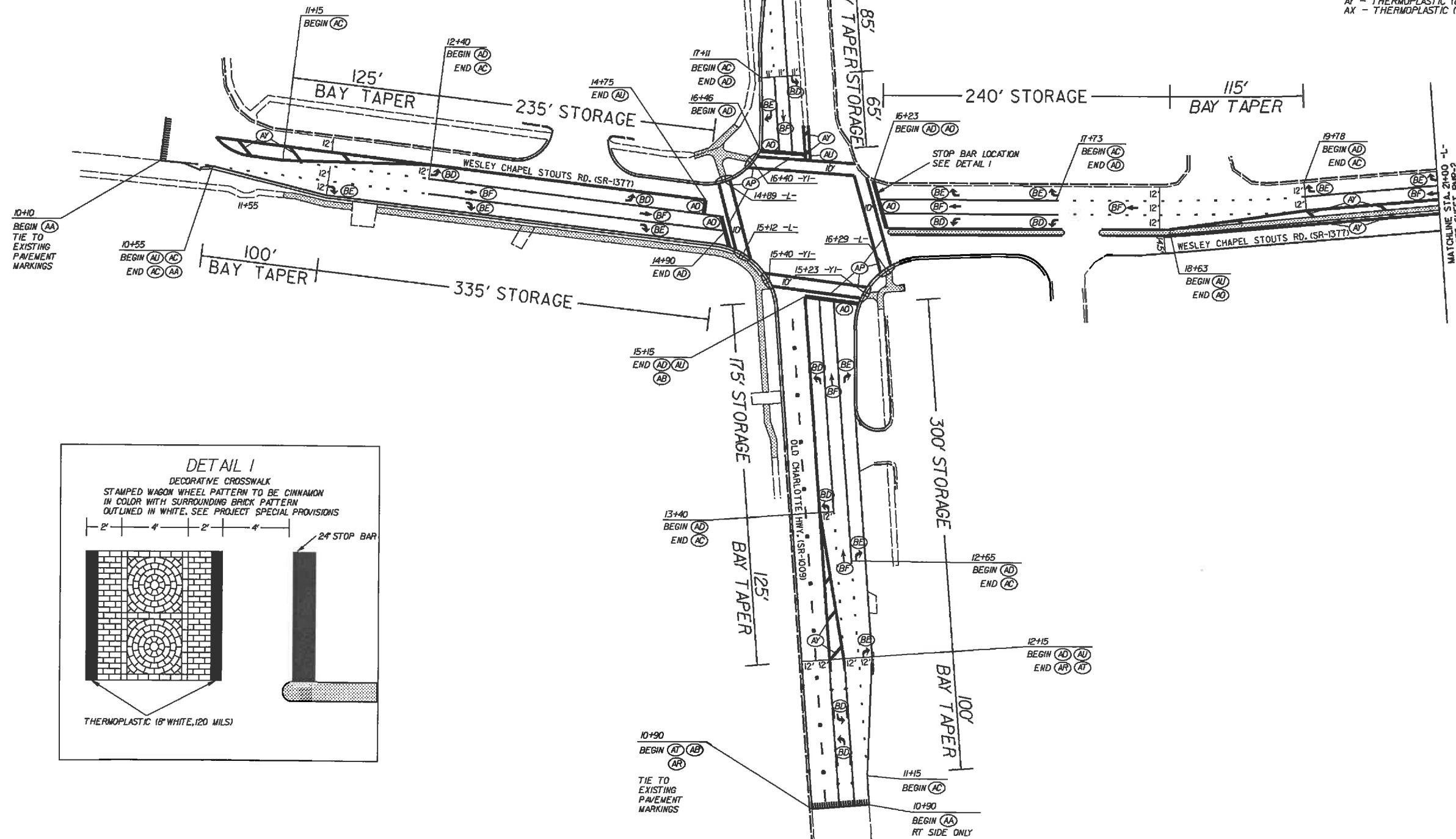
PAY ITEM	DESCRIPTION
----------	-------------

PAVEMENT MARKING LINES

AA - THERMOPLASTIC (4" WHITE, 90 MILS)	EDGELINE
AB - THERMOPLASTIC (4" WHITE, 120 MILS)	4" X 10' SKIP
AC - THERMOPLASTIC (4" WHITE, 120 MILS)	4" X 2' MINISKIP
AD - THERMOPLASTIC (4" WHITE, 120 MILS)	SOLID LANE LINE
AH - THERMOPLASTIC (8" WHITE, 90 MILS)	EDGELINE
AI - THERMOPLASTIC (8" WHITE, 90 MILS)	GORELINE
AJ - THERMOPLASTIC (8" WHITE, 90 MILS)	DIAGONALS
AO - THERMOPLASTIC (24" WHITE, 120 MILS)	STOP BAR
AP - THERMOPLASTIC (24" WHITE, 120 MILS)	CROSSWALK LINE
AQ - THERMOPLASTIC (4" YELLOW, 90 MILS)	EDGELINE
AR - THERMOPLASTIC (4" YELLOW, 120 MILS)	4" X 10' SKIP
AS - THERMOPLASTIC (4" YELLOW, 120 MILS)	4" X 2' SKIP
AT - THERMOPLASTIC (4" YELLOW, 120 MILS)	SINGLE CENTER
AU - THERMOPLASTIC (4" YELLOW, 120 MILS)	DOUBLE CENTER LINE
AV - THERMOPLASTIC (8" YELLOW, 90 MILS)	DIAGONALS
AX - THERMOPLASTIC (8" YELLOW, 90 MILS)	EDGELINE


PAVEMENT MARKING SYMBOLS

BB - THERMOPLASTIC (1" SCHOOL, 120 MILS)
BC - THERMOPLASTIC (ONLY, 120 MILS)
BD - THERMOPLASTIC (LEFT TURN ARROW, 90 MILS)
BE - THERMOPLASTIC (RIGHT TURN ARROW, 90 MILS)
BF - THERMOPLASTIC (STRAIGHT ARROW, 90 MILS)
BG - THERMOPLASTIC (COMBINATION STRAIGHT & LEFT ARROW, 90 MILS)
BH - THERMOPLASTIC (COMBINATION STRAIGHT & RIGHT ARROW, 90 MILS)
BM - THERMOPLASTIC (STOP, 120 MILS)
BT - THERMOPLASTIC (U TURN ARROW, 90 MILS)



ROADWAY IMPROVEMENTS ALONG
WESLEY CHAPEL STOUTS RD. (SR-1377)
AT THE INTERSECTION OF
OLD CHARLOTTE HWY (SR-1009)

SCALE	1"=50'	REVISIONS
DATE	3/11	
DWG. BY	TWB	
DESIGN BY	TWB	
APPROVED	RWB	



STATE	PROJECT NO.	SHEET NO.	TOTAL SHEETS
N.C.	43530	PMP-2	
F.A. PROJECT NO.			

PAVEMENT MARKING SCHEDULE

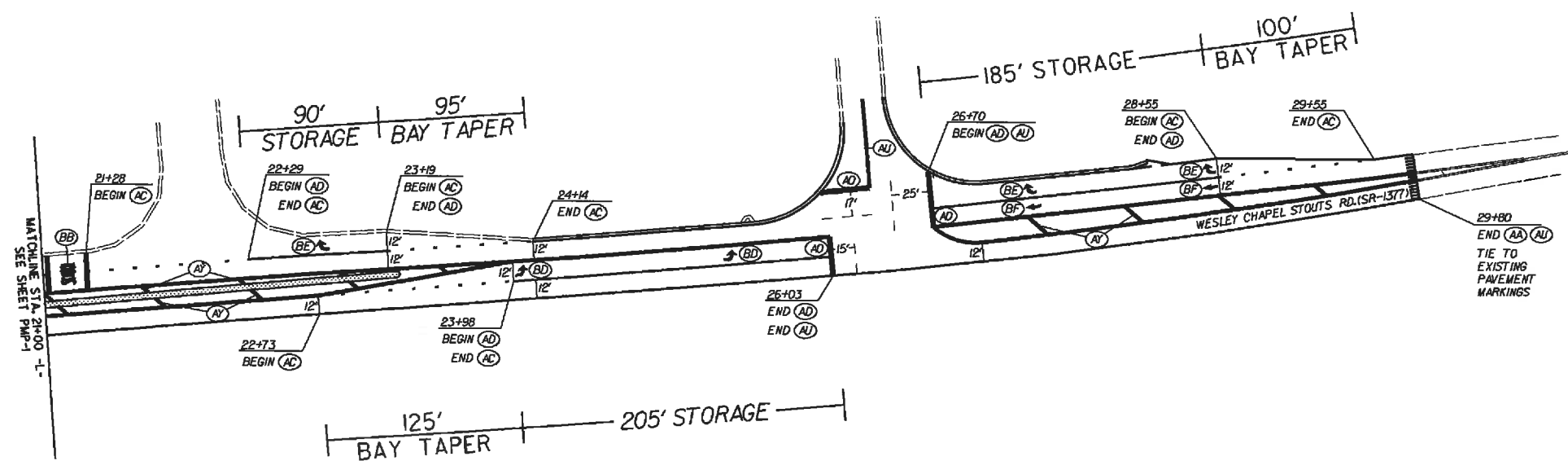
PAY ITEM	DESCRIPTION
----------	-------------

PAVEMENT MARKING LINES


AA - THERMOPLASTIC (4" WHITE, 90 MILS)	EDGE LINE
AB - THERMOPLASTIC (4" WHITE, 120 MILS)	4" X 10' SKIP
AC - THERMOPLASTIC (4" WHITE, 120 MILS)	4" X 2' MINISKIP
AD - THERMOPLASTIC (4" WHITE, 120 MILS)	SOLID LANE LINE
AH - THERMOPLASTIC (8" WHITE, 90 MILS)	EDGE LINE
AI - THERMOPLASTIC (8" WHITE, 90 MILS)	GORE LINE
AJ - THERMOPLASTIC (8" WHITE, 90 MILS)	DIAGONALS
AO - THERMOPLASTIC (24" WHITE, 120 MILS)	STOP BAR
AP - THERMOPLASTIC (24" WHITE, 120 MILS)	CROSSWALK LINE
AD - THERMOPLASTIC (4" YELLOW, 90 MILS)	EDGE LINE
AR - THERMOPLASTIC (4" YELLOW, 120 MILS)	4" X 10' SKIP
AS - THERMOPLASTIC (4" YELLOW, 120 MILS)	4" X 2' SKIP
AT - THERMOPLASTIC (4" YELLOW, 120 MILS)	SINGLE CENTER LINE
AU - THERMOPLASTIC (4" YELLOW, 120 MILS)	DOUBLE CENTER LINE
AY - THERMOPLASTIC (8" YELLOW, 90 MILS)	DIAGONALS
AX - THERMOPLASTIC (8" YELLOW, 90 MILS)	EDGE LINE

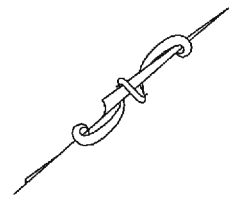
PAVEMENT MARKING SYMBOLS

BB - THERMOPLASTIC ('SCHOOL', 120 MILS)
BC - THERMOPLASTIC ('ONLY', 120 MILS)
BD - THERMOPLASTIC (LEFT TURN ARROW, 90 MILS)
BE - THERMOPLASTIC (RIGHT TURN ARROW, 90 MILS)
BF - THERMOPLASTIC (STRAIGHT ARROW, 90 MILS)
BG - THERMOPLASTIC (COMBINATION STRAIGHT & LEFT ARROW, 90 MILS)
BH - THERMOPLASTIC (COMBINATION STRAIGHT & RIGHT ARROW, 90 MILS)
BM - THERMOPLASTIC ('STOP', 120 MILS)
BT - THERMOPLASTIC (U TURN ARROW, 90 MILS)



ROADWAY IMPROVEMENTS ALONG
WESLEY CHAPEL STOUTS RD. (SR-1377)
AT THE INTERSECTION OF
OLD CHARLOTTE HWY (SR-1009)

SCALE	1"=50'		REVISIONS
DATE	3/11		
DWG. BY	TWB		
DESIGN BY	TWB		
APPROVED	RWB		



STATE	PROJECT NO.	SHEET NO.	TOTAL SHEETS
N.C.	43530	PMP-3	
F.A. PROJECT NO.			

PAVEMENT MARKING SCHEDULE

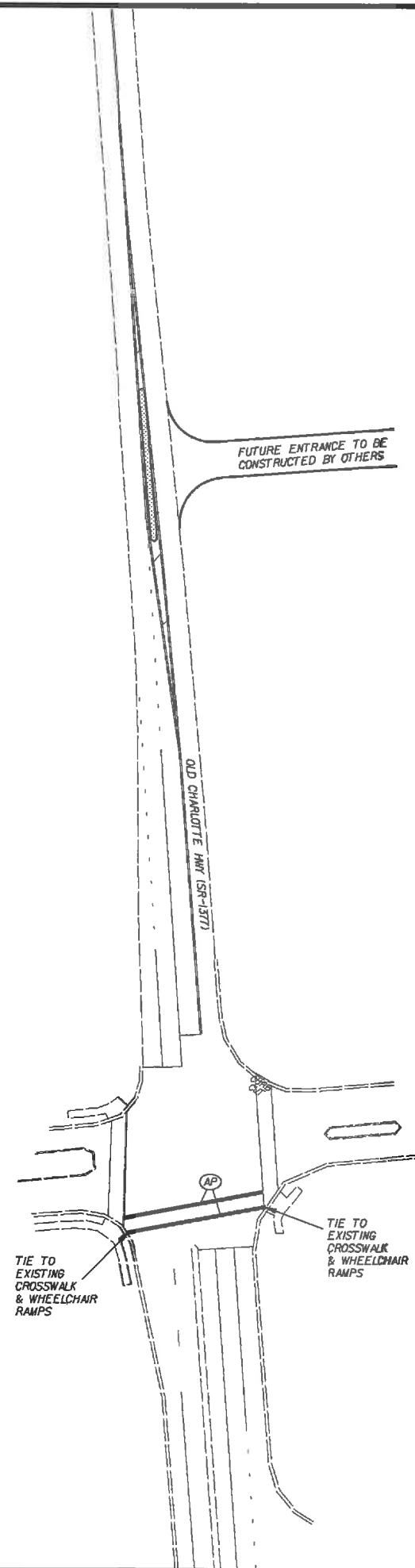
PAY ITEM DESCRIPTION

PAVEMENT MARKING LINES

AA - THERMOPLASTIC (4" WHITE, 90 MILS)	EDGE LINE
AB - THERMOPLASTIC (4" WHITE, 120 MILS)	4" X 10' SKIP
AC - THERMOPLASTIC (4" WHITE, 120 MILS)	4" X 2' MINISKIP
AD - THERMOPLASTIC (4" WHITE, 120 MILS)	SOLID LANE LINE
AH - THERMOPLASTIC (8" WHITE, 90 MILS)	EDGE LINE
AI - THERMOPLASTIC (8" WHITE, 90 MILS)	GORE LINE
AJ - THERMOPLASTIC (8" WHITE, 90 MILS)	DIAGONALS
AO - THERMOPLASTIC (24" WHITE, 120 MILS)	STOP BAR
AP - THERMOPLASTIC (24" WHITE, 120 MILS)	CROSSWALK LINE
AQ - THERMOPLASTIC (4" YELLOW, 90 MILS)	EDGE LINE
AR - THERMOPLASTIC (4" YELLOW, 120 MILS)	4" X 10' SKIP
AS - THERMOPLASTIC (4" YELLOW, 120 MILS)	4" X 2' SKIP
AT - THERMOPLASTIC (4" YELLOW, 120 MILS)	SINGLE CENTER
AU - THERMOPLASTIC (4" YELLOW, 120 MILS)	DOUBLE CENTER LINE
AV - THERMOPLASTIC (8" YELLOW, 90 MILS)	DIAGONALS
AX - THERMOPLASTIC (8" YELLOW, 90 MILS)	EDGE LINE

PAVEMENT MARKING SYMBOLS

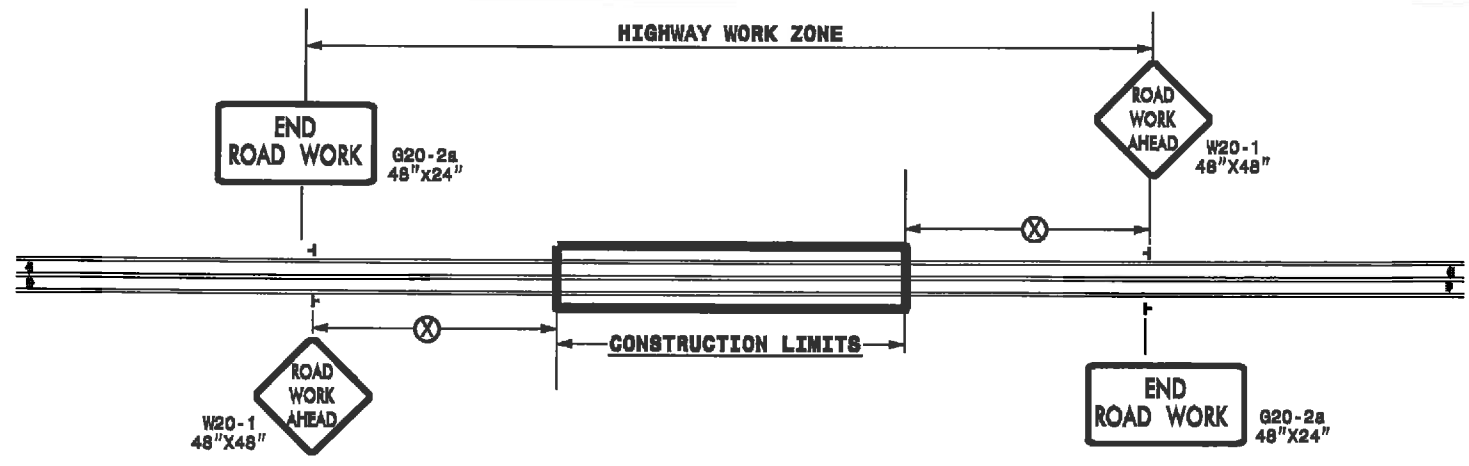
BB - THERMOPLASTIC ('SCHOOL', 120 MILS)
BC - THERMOPLASTIC ('ONLY', 120 MILS)
BD - THERMOPLASTIC (LEFT TURN ARROW, 90 MILS)
BE - THERMOPLASTIC (RIGHT TURN ARROW, 90 MILS)
BF - THERMOPLASTIC (STRAIGHT ARROW, 90 MILS)
BG - THERMOPLASTIC (COMBINATION STRAIGHT & LEFT ARROW, 90 MILS)
BH - THERMOPLASTIC (COMBINATION STRAIGHT & RIGHT ARROW, 90 MILS)
BM - THERMOPLASTIC ('STOP', 120 MILS)
BT - THERMOPLASTIC (U TURN ARROW, 90 MILS)



ROADWAY IMPROVEMENTS ALONG
 WESLEY CHAPEL STOUTS RD. (SR-1377)
 AT THE INTERSECTION OF
 OLD CHARLOTTE HWY (SR-1009)

SCALE	1"=50'		REVISIONS
DATE	3/11		
DWG. BY	TWB		
DESIGN BY	TWB		
APPROVED	RWB		

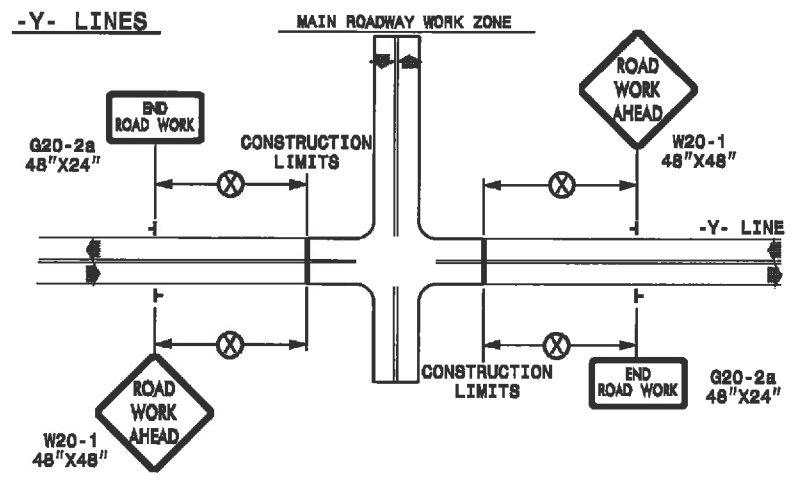
TWO-WAY UNDIVIDED ** (L-LINES)



POSTED SPEED LIMIT (M.P.H.)	RECOMMENDED MINIMUM SIGN SPACING
≤ 50	500'
≥ 55	1000'

STATE OF NORTH CAROLINA
DEPT. OF TRANSPORTATION
DIVISION OF HIGHWAYS
RALEIGH, N.C.

ROADWAYS INTERSECTING ALONG 2 WAY UNDIVIDED WORK ZONE (Y-LINES)



GENERAL NOTES

- USE FLUORESCENT ORANGE SHEETING (TYPE VII OR HIGHER) ON ALL ADVANCED WORK ZONE SIGNS.
- DO NOT INSTALL ADVANCE WARNING SIGNS MORE THAN 3 DAYS PRIOR TO BEGINNING OF WORK.
- SIGNS SHOWN ARE REQUIRED FOR WORK ZONES THAT WILL REMAIN IN EFFECT OVERNIGHT. FOR SHORT-TERM DAILY MAINTENANCE TYPE OPERATIONS, THIS SIGNING APPLICATION IS OPTIONAL; MAY USE ONLY APPLICABLE ROADWAY STANDARD DRAWINGS INSTEAD. HOWEVER, IF THIS SIGNING APPLICATION IS USED, SIGNS MAY BE PORTABLE MOUNTED.
- ALL SIGN SPACING DIMENSIONS ARE APPROXIMATE, FIELD ADJUST AS NECESSARY OR AS DIRECTED.
- USE 3LB STEEL U-CHANNEL POST OR 4" X 4" WOOD POST FOR ALL WORK ZONE SIGNS. 3LB STEEL U-CHANNEL POSTS MUST MEET THE REQUIREMENTS OF STANDARD SPECIFICATION SECTION 1094-1(B), MAY BE GALVANIZED STEEL, OR MAY BE PAINTED GREEN BY THE POST MANUFACTURER. SQUARE STEEL TUBING POSTS HAVING EQUIVALENT STRENGTH OF THE 3 LB STEEL U-CHANNEL POST ARE ALSO ACCEPTABLE FOR USE. ERECT SIGNS PER ROADWAY STANDARD DRAWING 1110.01. PAYMENT FOR WOOD POSTS, 3LB STEEL U-CHANNEL AND SQUARE STEEL TUBING POSTS WITH SIGNS WILL BE MADE ACCORDING TO STANDARD SPECIFICATION "WORK ZONE SIGNS" SECTION 1110.
- WHEN NECESSARY, USE SPLICING IN ACCORDANCE WITH ROADWAY STANDARD DRAWING NO. 1110.01. REMOVE ENTIRE POST WHEN REMOVING SIGNS WITH SPLICED POSTS.
- DO NOT BACK BRACE SIGN SUPPORTS.
- ** TWO-WAY UNDIVIDED ADVANCE WARNING SIGN CONFIGURATION MAY BE USED ON URBAN MULTI-LANE FACILITIES WHERE CONDITIONS LIMIT THE USE OF DUAL MOUNTED SIGNS AS DETERMINED BY THE ENGINEER.


LEGEND

┌ STATIONARY SIGN

➔ DIRECTION OF TRAFFIC FLOW

DETAIL DRAWING FOR
TWO-WAY UNDIVIDED
WORK ZONE WARNING SIGNS

SHEET 1 OF 1

APPROVED: _____	DATE: _____	DETAIL DRAWING FOR TWO-WAY UNDIVIDED AND URBAN FREEWAYS ADVANCED WORK ZONE WARNING SIGNS	
SEAL	SCALE: NONE	REVISIONS	
	DATE: 7-98	10/01	
	DESIGN BY: 10-98	03/04	
	DESIGN BY: 01/01	11/04	
	REVIEWED BY: _____		

I3-AUG-2002 15:05
 S:\DDC\RDY\Union\wesley_chapel_outouts\top\2way_undiv.&.urban_frwy.dgn
 Tblurleson AT D:\DDC\CA0258893